



Conversion of KIO Standard Base Plate to Large Flange

July, 2011

This operation can be performed without removing the spreader arms and without removing the support cords or wires of a working hexagonal beam by K4KIO. However, it will be necessary to remove both flanges of the base plate and the center post. Therefore, the beam must be removed from the mast in order to carry out the conversion.

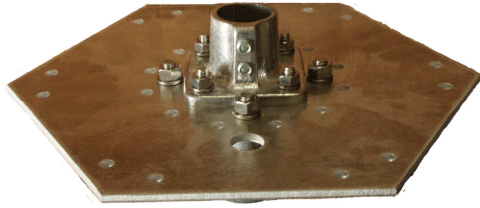
See Figures 1 and 2 to see what the base plate will look like when you complete the conversion. (No U bolts or spreader arms are shown for simplicity)

Steps to convert:

1. Remove the beam from the mast and set it on a table, the ground, a large paint bucket or other suitable working surface.
2. Remove all wires from the center post terminals and allow the wires to hang loose.
3. Remove the cap from the center post but do not remove the support cords. Allow the cap to hang in the air holding the cords in tension.
4. Loosen the two set screws in the flange and remove the center post.
5. Remove the two flanges both top and bottom using the proper size wrenches.
6. Mark four new holes using the large flange as a template placed over the existing holes on the top of the base plate.
7. Drill four new 7/16 inch holes through the base plate as indicated in Fig. 3.
8. Replace the four 5/16 inch hex bolts on the top flange with new shorter hex bolts supplied and orient the bolts with the heads below the base plate and the nuts facing upward on the existing top flange. Use the old nuts and the old lock washers previously on the flange.
9. Now install the new large flange on the bottom using 3/8 inch bolts supplied and the newly drilled holes. Orient the bolts facing upward with the nuts on the top of the base plate. Use the lock washers supplied.
10. Replace the center post in the top flange and tighten the two set screws.
11. Re-install the center post cap.
12. Re-install the wires on the center post terminals.

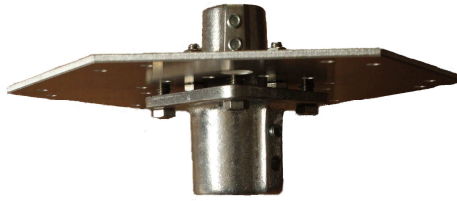
The beam is ready to re-install on the mast.

Figure 1. Top of converted base plate



Note that all bolts are facing in the same direction on the large flange base plate. This is different than the regular base plate in which the four nuts face downward.

Figure 2. Bottom of converted base plate



Note that the bolt heads of the small flange are beneath the large flange. Therefore, the large flange is NOT flush with the base plate. The large flange sits atop the bolt heads that secure the small flange on the other side of the base plate.

Figure 3.

